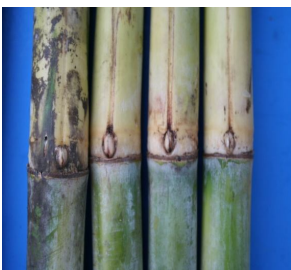


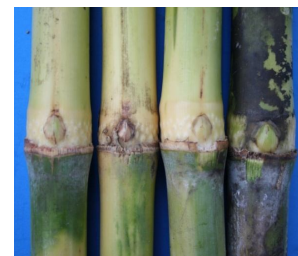
Sugarcane varieties developed through AICRP on Sugarcane & released/ notified by Central Varietal Release Committee (CVRC)

1. **CoLk 09204 (*Ikshu-3*):** This variety has been developed by ICAR-IISR, Lucknow under **mid-late** group for North-West zone. The variety recorded cane yield by 82.80 t/ha, CCS yield 9.30 t/ha and sucrose 17.0% in juice. It is lodging tolerant and suitable for multiple ratooning with lush green top at maturity. This provides additional benefit in the form of green fodder to the farmers.



2. **CoLk 11206 (*Ikshu-4*):** This variety has been developed by ICAR-IISR, Lucknow in **mid-late** group for North West Zone. The variety recorded cane yield by 91.50 t/ha, CCS yield 11.20 t/ha and sucrose 17.65% in juice.

3. **CoLk 11203 (*Ikshu-5*):** This variety has been developed by ICAR-IISR, Lucknow in **early group** for North-West Zone. The variety recorded cane yield by 81.97 t/ha, CCS yield 10.52 t/ha and sucrose 18.41% in juice. The variety CoLk 11203 is a good ratooner.



4. **CoA 11321 (*Sri Mukhi*):** This variety has been developed by RARS, Anakapalle in **early group** for East-Coast Zone. The variety has exhibited cane yield by 111.31 t/ha, CCS yield 13.59 t/ha and sucrose 17.16% in juice. It is a thick yellowish green cane with black encrustation, cylindrical internodes with straight alignment. Medium size bud, round in shape, bud cushion and bud groove absent.

5. **UP 09453:** This variety has been developed by SRS, Gorakhpur (UPCSR, Shahjahanpur) in **early group** for North Central & North Eastern Zones. The variety has exhibited cane yield by 74.74 t/ha, CCS yield 8.76 t/ha and sucrose 17.90% in juice.



6. **Co 06022:** This variety has been developed by ICAR-SBI, Coimbatore in **early group** for Peninsular Zone. The variety has exhibited cane yield by 105.23 t/ha, CCS yield 13.76 t/ha and sucrose 18.88% in juice.